

# THE FOCAL POINT

The Newsletter of Kehilath Israel Synagogue



## MESSAGE FROM RABBI MOSHE GRUSSGOTT



**Jackye Goldberg's** siblings **Terry, Jerry, and Dvora** shared with me the following beautiful tribute to her memory and asked me to share it with the shul at large, so I have chosen to do so in this space. May Jackye's memory be for a blessing!

This week's parsha, Shemot, introduces us to a series of extraordinary women whose courage and faith played a

central role in the survival of the Jewish people. As we approach the Shabbat preceding the shloshim, the conclusion of the first thirty days of mourning for our beloved Jackye Goldberg, their stories invite us to reflect on qualities that Jackye embodied throughout her life.

Shemot opens with Pharaoh's decree to drown all newborn Jewish boys. The Hebrew midwives, Shifra and Puah, refused to comply with this edict, choosing to champion God's ways rather than obey Pharaoh. The Talmud identifies the two midwives as Yocheved and Miriam, Moshe's mother and sister. Rashi explains that because they upheld life in the face of inhuman cruelty, God rewarded them with lasting spiritual legacy through the priestly and Levitic lines.

The Midrash relates that Pharaoh's decree led Amram, Moshe's father, to separate from his wife Yocheved out of

despair, with other husbands following his example. It was Amram and Yocheved's daughter Miriam who challenged this decision, arguing that giving up on the future would cause even greater harm than Pharaoh's decree itself. Her clarity and faith helped restore hope and ensured the continuation of the Jewish people.

With renewed resolve, Yocheved placed her infant son in a basket in the Nile, while Miriam remained nearby, ready to assist. Batya, Pharaoh's daughter, then rescued the child, in defiance of her father's command, becoming an unexpected partner in the survival and redemption of the Jewish people.

These women—Shifra, Puah, Yocheved, Miriam, and Batya—shared a commitment to moral courage, compassion, and responsibility toward others. These same qualities characterized Jackye, A"H. She stood up for what she believed was right, cared deeply for those around her, and remained present for others in meaningful and practical ways. She did not shy away from speaking out when it mattered, always guided by her integrity and core values.

We honor Jackye, Yehudit Sarah bat Avraham Aharon, as a Jewish heroine in her own life story. May her memory be a blessing.

### RABBI GRUSSGOTT'S OFFICE HOURS:

Monday, Wednesday, Thursday: 12:00 4:00 PM;  
By appointment call ext. 5

## MESSAGE FROM PRESIDENT JOSEPH ADAMOUS



As we begin the new year 2026, I would like to wish a happy and healthy new year to our congregants.

As you may know, by now, Shelley Palmarine, our Executive Director has departed KI to take a job at Northland Cathedral church. I want to express my appreciation to her for her hard work at KI. She helped us straighten our financial processes and also reduce some of our recurring building maintenance expenses. I want to wish her a good luck as she begins a new chapter in her professional life.

As we say goodbye to Shelley, I am delighted to welcome **Robin Abramowitz** as our new Executive Director. With extensive experience working with Jewish and other civil nonprofit organizations, Robin brings a wealth of knowledge and Passion to our congregation. I am especially excited to have her return to KI synagogue where she was once a valued member. I look forward to energy, vision and leadership she will bring to our congregation.

As I mentioned in my previous article, we celebrated Hanukkah on December 21st at KI starting with a ceremonial group candlelighting and beautiful singing by children, headed by **Cantor Hayoun**. The barbecue dinner was fabulous thanks to hard work of **Pete Cabell** and **David Mandelbaum** and a group of **dedicated volunteers**. I think everybody went home gastronomically very satisfied.

This year **Purim will occur on March 2<sup>nd</sup> and 3<sup>rd</sup>**. I am looking forward to our Purim seuda and all that goes with it. If the past is a good indicator, we will have a festive affair that includes a nice dinner.

On Saturday, January 3<sup>rd</sup> our guest speaker was **Dahnja Klaf**, the Israeli Emissary to Kansas City. She presented her perspective of before and after October 7 attack.

In conclusion, I would like to ask you if you or someone you know is experiencing a lifecycle event, joyful or difficult, and could benefit from community support, please contact the KI office at (913) 642-1880 or support@kisyn.org. We are here to support and celebrate with you.

**Joseph Adamous**

### WEEKDAY SERVICES IN THE CHAPEL

Sunday *Shacharit* .....9:00 AM  
Daily *Shacharit* .....7:00 AM

Sunday -Thursday  
*Mincha & Maariv*:

Week of February 1. \_\_\_\_\_ 5:30 PM  
Week of February 8. \_\_\_\_\_ 5:35 PM  
Week of February 15 \_\_\_\_\_ 5:45 PM  
Week of February 22 \_\_\_\_\_ 5:50 PM

### SHABBAT SERVICES

*See Synagogue Calendar inside*



**Judaica Book Collection Offered for Free**  
Longtime Kehilath Israel member **Jackye Goldberg Z"L**, who recently passed away, had an extensive Judaica book collection. This collection is

now available for free to any K.I. member. The book collection is located in the K.I. lobby and can be seen during regular office hours-Monday thru Thurs.-9 am-4 pm and Fri. 9 am-3 pm.

# Comfort in Community: Living with Pregnancy Loss

Members of the Jewish community who have experienced pregnancy or infant loss are warmly invited to attend Comfort in Community: Living with Pregnancy Loss. The event will be from **3:00-5:00 pm at Congregation Beth Shalom, 14200 Lamar, Overland Park, KS** on **Sunday, February 22, 2026.**

The loss of a pregnancy is something that parents have sometimes kept private – maybe because it is too painful to discuss, or perhaps because they do not want to make others uncomfortable. Some people have had to live with concerns about stigma, or the pain of well-intentioned remarks that moved past the pain, such as assurances that the person will become pregnant again.

Yet losing a pregnancy can be a big deal. For many, it is an emotionally painful event that never leaves them, a life-long grief.

In an effort to help members of the Jewish community deal with this loss in a communal setting, a spiritual care service will be held for all adults who have lost a pregnancy at any time and feel a need to be with others and remember the child who did not enter their world. **This program is open to people of all ages and genders who have personal experience with this type of grief.**



Join **Rabbi Talia Kaplan, Congregation Beth Shalom; Ellen Portnoy; Spiritual Care Volunteer, JFS; Rabbi Monica Kleinman, Pardes Institute of Jewish Studies;** and several others who have experienced pregnancy loss as they guide us through a brief healing service and then offer various breakout groups. There will be opportunities to share, listen, write, pray, and grieve.

*The service is hosted by Jewish Community Chaplaincy and Priya Programs of Jewish Family Services, Congregation Beth Shalom, and Kehilath Israel Synagogue, with co-sponsorship from The Temple, Congregation B'nai Jehudah, and Congregation Beth Torah.*

We request that you RSVP by February 16, 2026, using this link:

<https://bethshalomkc.shulcloud.com/form/Pregnancy%20Loss%20Memorial%20Service>

*While we love children, we ask that this be an adult-only space.*

## WOMEN PARTICIPATION AT K.I. AS APPROVED BY THE RITUAL COMMITTEE

We have been developing new opportunities for women's participation at our synagogue within the framework of KI's halacha. The ritual committee has approved the following to be added, reinstated, and continued:

- **Rosh Chodesh Women's Minyan** (on pre-selected Rosh Chodesh dates, women-only, held in the chapel)
- **Women's Services for Bat Mitzvot**
  - Girls can read from the Torah for their bat mitzvah and lead the Saturday night Torah Service in the main sanctuary. Men and women can be in attendance, however; only women will be on the Bima. When a bat mitzvah is being held in the sanctuary, an alternative service can be held in the Chapel concurrently, if needed.
- **Presenting a D'var Torah** – women can present a D'var Torah during the following:
  - Main Rosh Chodesh service before the Blessing of the New Moon
  - Chanukah Shabbat Services
  - On Purim before the Megillah reading
- **Additional opportunities to participate in the main service:**
  - Read the Prayer for the State of Israel and The Government
  - Introduce the Haftorah (text can be self-written or provided)
  - Read the English for the Misheberach for the State of Israel or the Soldiers on a weekly basis
  - Lead responsive readings in English during the four Yizkor services
  - On the High Holidays, read an intro to piyyut and at least one piyyut in English
  - On Purim, explain the rules of the Megillah reading, and read the first few paragraphs in English
- **On Simchat Torah**, women will continue to have their own area to dance with the Torah
- **Adult women Bat Mitzvah and Hebrew classes.** The curriculum will include learning trope, the rules about the Bima, removing a Torah from the Aron Kodesh, and more. Women will have the opportunity to have their own bat mitzvah and/or help girls during their bat mitzvah service.
- **The Shabbat Women's Circle** will continue to meet once a month from 9:45 – 10:45 am. We will end in time to hear the Rabbi's sermon.
- **Increased leadership opportunities:**
  - At least one woman will serve on the Ritual Committee and will assist in organizing our women's ritual opportunities
  - The synagogue Board of Directors will make efforts to encourage women to serve on the board and on committees.

## WOMEN PARTICIPATION AT KI , CONTINUED

Our new **Women's Tefillah class** will begin on **Thursday, January 22<sup>nd</sup>, 2026 at 7:00 pm on Zoom**, led by Rabbi Grussgott, and will continue every Thursday. These sessions will be an opportunity for us to come together as a community of women and shape our new opportunities together. We will discuss and decide together on options for our women's tefillah services, learn the essential prayers, rules and procedures for holding a minyan and Torah service, and more. All levels of experience are welcome. **We encourage women who are absolute beginners and non-Hebrew readers to join us.** To RSVP and receive the online meeting link, please contact Henri at [henri@kisyn.org](mailto:henri@kisyn.org).

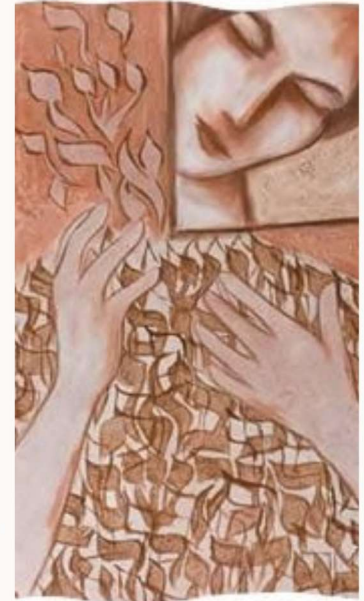
Thank you to the women of KI who have been working to make this happen. We especially dedicate our efforts in memory of Jackye Goldberg, who previously layned Torah during Women's Rosh Chodesh services and greatly wanted to do so again.

If you have any questions, please contact Ellen Portnoy at [elsuopo@gmail.com](mailto:elsuopo@gmail.com).

### WOMEN'S TEFILLAH CLASS

THURSDAYS AT 7PM  
STARTING 1/22

Join our new Women's Tefillah class where we'll learn from Rabbi Grussgott the essential components for holding our future women's tefillah. We will work together to decide how we want to structure our Women's Minyan. All levels of prayer and Hebrew experience are welcome.



RSVP TO HENRI (PROGRAM COORDINATOR) AT  
[HENRI@KISYN.ORG](mailto:HENRI@KISYN.ORG)

## PURIM CELEBRATION & DINNER – TUESDAY, MARCH 3

Join us for a festive Purim evening on **Tuesday, March 3, beginning at 5:30 pm** with a Megillah reading, followed by Mincha/Ma'ariv. After services, stay for an evening of entertainment featuring our Cantor and other performers singing beloved songs from *Fiddler on the Roof*, and enjoy a delicious Purim dinner together as a community.

Watch your email inbox for details and sign-up information!

PURIM IS COMING! MARCH 2-3

COSTUMES ON,  
GROGGERS READY,  
HAMANTASCHEN WAITING –  
LET'S CELEBRATE!



## UPCOMING EVENTS



KI KIDS  
OLYMPICS *ON ICE*



Kansas City Ice Center (Shawnee, KS)  
15 February 2026 | 12:30 – 2:00 PM  
\$10 Per Person (Ages 4+) Before 2/9  
\$15 Per Person From 2/9 - 2/13  
[KISYN.EVENTSMART.COM/OLYMPICS](https://kisyn.eventsmart.com/olympics)

For children and their families



Thanks to everyone who came  
out to  
*Havdalah Happy Hour,  
Family Movie Night  
and our Hanukkah Party!*

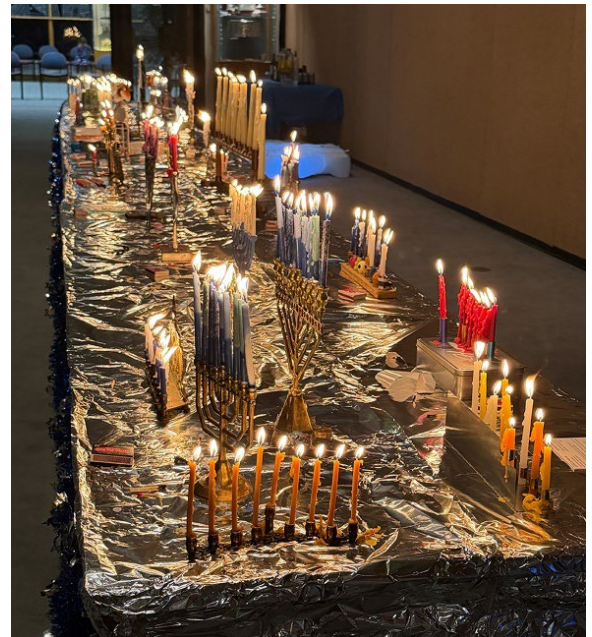
### SUMMER MACCABI GAMES

From August 2–7, 2026, Kansas City will have the extraordinary honor of hosting the International JCC Maccabi Games, an Olympic-style competition that will bring together nearly 1,000 Jewish teens, ages 13–17, from around the world.

The JCC estimates the games will require over 1,000 volunteers, including host families for the athletes and staffing for events.

**K.I. Synagogue Men's Club** will be organizing a team of volunteers. For more information: Bill Greenberg - [greenbergwilliam@hotmail.com](mailto:greenbergwilliam@hotmail.com)

**Volunteer signup:** <https://jccmaccabi.org/>





**BECOME A KEHILATH ISRAEL**

**2026 MISHLOACH MANOT PATRON**

**A PURIM TRADITION – the giving of food and drink to celebrate the joyous holiday of Purim!**  
*Please consider a donation of \$216 (12 x Chai) to help Kehilath Israel Synagogue continue the tradition of delivering Mishloach Manot (Purim treat bags) to all member families.*

Mail or bring this form and donation to the K.I. office. All Patron’s names will be included with the Purim bags.

**MISHLOACH MANOT Patron names must be received no later than February 16, 2026 to be included with the bag.**

Name of Patron \_\_\_\_\_



**ORDER DELICIOUS HAMANTASCHEN BY THE DOZEN – BAKED IN OUR DAIRY KITCHEN BY SHELLEY RISSIEN AND A TEAM OF VOLUNTEERS**

Please indicate how many dozen hamantaschen you are purchasing:

**Apple** \_\_\_\_\_ (\$15 dz).      **Apricot** \_\_\_\_\_ (\$15 dz)      **Cherry** \_\_\_\_\_ (\$15 dz)

**Chocolate Chip** \_\_\_\_\_ (\$15 dz)      **Poppy Seed** \_\_\_\_\_ (\$20 dz)

**ORDERS MUST BE RECEIVED NO LATER THAN FEB. 15, 2026**

Bring or mail completed form and payment to the KI office.

You can also Order online at <https://kisyn.eventsmart.com/events/purimorder/>

Name \_\_\_\_\_

Tel # \_\_\_\_\_

Email \_\_\_\_\_

Amount Enclosed \$ \_\_\_\_\_

**HAMANTASCHEN ORDERS MUST BE RECEIVED NO LATER THAN FEB. 15, 2026**

**Mailing address: 10501 Conser St. Overland Park, KS 66212**



ORDER FORM ON REVERSE

Cut and Mail:

**Kehilath Israel Synagogue**

**10501 Conser St. Overland Park, KS 66212**



# Chili Night & MELAVA MALKA

6:45 | SATURDAY  
PM | FEBRUARY 21<sup>ST</sup>  
KI SYNAGOGUE

As Shabbat comes to a close, gather with us for Chili Night & Melava Malka, an evening adult learning session. We'll share vegetarian chili and community, then learn together about the origins, customs, and deeper significance of Melava Malka. Come learn what Melava Malka is all about, why we take time to linger after Shabbat, and how this tradition helps set the tone for the week ahead.

QUESTIONS? EMAIL  
HENRI@KISYN.ORG

**Sign up online at**  
[kisyn.eventsmart.com/chilignight](https://kisyn.eventsmart.com/chilignight)

## MILESTONES

### Personnel Changes at Kehilath Israel

Kehilath Israel expresses its gratitude to our outgoing Executive Director **Shelley Palmarine** who has departed KI to take a similar position at Northland Cathedral. In the year and a half Shelley has served as K.I.'s Executive Director, she has streamlined many of the K.I. administrative/financial processes as well as overseen multiple building projects and security updates. Our best wishes to Shelley as she begins a new chapter in her professional life.

As we say goodbye to Shelley, we welcome **Robin Abramowitz** as **K.I.'s new Executive Director**. A native of the Kansas City area, Robin has been an active participant in the Kansas City Jewish community all of her life. See the March edition of the *Focal Point* to learn more about Robin.

### Sympathy

Kehilath Israel expresses our sympathy to the families of **Zelma Saltzman, Jackye Goldberg** and **Joel Zitron**. May their memories be for a blessing.

### Mazel Tov!



☆ To **Cantor Hayoun & Vera Zelikson** on the engagement of Cantor's grandson **Jonatan Avidan** to **Efrat Chassidim**. The couple will marry on March 22 and make their home in Jerusalem.



### Mazel Tov to these couples celebrating anniversaries:

February 1	Anatoly & Anzhelika Khalemsky	32 <sup>nd</sup>
February 2	Reuben & Mary Jane Stern	58 <sup>th</sup>
	Clint & Cristina Gillom	24 <sup>th</sup>



### Mazel Tov to these congregants celebrating birthdays:

Fani Schiffman, Audrey Brand, Levi Shanberg (Feb. 2nd); Shirley Pener, Karen Lesky (Feb. 3rd); Rosemary Gorin (Feb. 4th); William Schiffman (Feb. 5th); Melissa Rosenthal, Ruth von Ende, Bonita Krutz (Feb. 6th); Matan Pader (Feb. 8th); Kayla Goldenberg, Beverly Mallin, Sharon Levin (Feb. 9th); Esti (Esther) Mandl (Feb. 10th); Svetlana Kapustin (Feb. 11th); Alan Fuchsman, Charlene Rubin (Feb. 12th); Farrah Kass, Joshua Glatt (Feb. 13th); Ronald Bronstein (Feb. 14th); Stella Hoffman, Gena Agron (Feb. 15th); SirJames Thomas (Feb. 16th); Jonathan Freiden (Feb. 17th); Barbara Molotsky (Feb. 18th); Jacob Abrams (Feb. 19th); Michael Minoofar, Frank Tankard, Sharon Noorollah (Feb. 20th); Abbott Zolotor, William Greenberg (Feb. 21st); Martin Gorin (Feb. 22nd); Jason Smartt, Chloe Stone (Feb. 23rd); Karen Gortenburg, Civia White (Feb. 25th); Valerie Bordy (Feb. 26th); Elizabeth von Ende (Feb. 27th); Eitan Silver, Jacob Margolies, Adam Rich (Feb. 28<sup>th</sup>).

### Todah Rabah

### תודה רבה

To **Max Jevinsky** for delivering *The Focal Point* to the main KCMO post office each month, ensuring that those who prefer a print edition can still receive it.

To **Brenda Fishman, Maureen Minoofar, Katie Rosenbaum, Tamara Kingston, Janet Stone, Cristi Gillom, Rachel Lubowicz, Amy Stoltz, Robert Weisberger & Ileen Neufeld** for preparing our delicious Shabbat kiddushim.

## ESRIG-GOULD MEMORIAL ALCOVE TABLETS

With Reverence We Record The Following Yahrzeits:

### 14 Shevat - Feb. 1

Bina Belzycki  
Chaim Belzycki  
Pauline Chernikoff  
Siegfried Englander  
Bella Fendelman  
Melvin Gortenburg  
Dorothy Hyken  
Florence Levin  
Rose Milinkowsky  
Abraham Osadchy  
David Rabinowitz  
Julius Sander  
Karl Schick  
Gary Shain  
Marvin Silver  
Abe Untrif

### 15 Shevat - Feb. 2

Shlomo Bratman  
Morris Fishman  
Isfried Gottlieb  
Stanley Katz  
Jake Levine  
Sam Orlovick  
Paula Perner  
Marti Rabin  
Joseph Rosen  
Azriel Rothstein  
Samuel Rubins  
Joseph Schwartz  
Joe Simon  
Mary Spack  
Gayle Zorlene Weil

### 16 Shevat - Feb. 3

Louis Fox  
Stephen Friedman  
Sarah Hammer  
Morris M. Levine  
Sol Molotsky  
Jean Odesnik  
Sam Portnoff  
Rela Rozenberg

Michael Singer  
Michael Singer  
Belle (Singer) Titensky

### 17 Shevat - Feb. 4

Sylvia Aaron  
Joseph Brown  
Leo Brown  
Charles Cohen  
Esther Cosner  
Joseph Devoe  
Harry Feingold  
Clara Gladstone  
Marie Guckenheimer  
Joseph Kuluva  
Anna Magilow  
Jerrold Mendelson  
Gertrude Gittel Polsky  
Goldye Radetsky  
Dalles Raskin  
Dorothy Straf  
Rebecca Yeddis  
Sam Zitron

### 18 Shevat - Feb. 5

Matt Anger  
Albert Baumgarten  
Harry Cohn  
Daniel Jaffe  
Baby Katz  
Bella Klinock  
Phillip Kushner  
Harold Loeffler  
Noel Mermey  
Sarah Nelson  
Leonard Pape  
Ben Paslove  
Yetta Brooks Price  
Marian Shear  
Joel Silberg  
Albert Weiner  
Lily Winer  
Rose Zemelman

### 19 Shevat - Feb. 6

Freda Agron  
Golda R. Gerecht  
Milton Indin  
Lawrence R. Jabenis  
Abraham Levikow  
Samuel Markowitz  
Harold Rosmarine  
Neta Scheer  
Abraham Sladowitz  
Bessie Stempleman  
Shraga Teitelbaum  
Robert M. Tigerman  
Joy Tulper

### 20 Shevat - Feb. 7

Dora Finkelston  
Margaret Shanin  
Hoffman  
Fred Minowitz  
Hyman Odesnik  
Jennie Ritz  
Harold Shorr  
Sam Taylor  
Leo Weinberg  
Jacob Wicentowsky  
Hyman Winegar  
Hymon Winegar  
Abraham Yodler  
Zelda Zalzman  
David Zimmerman

### 21 Shevat - Feb. 8

Israel Adelman  
Ed Aronson  
Fannie Balot  
William Cohen  
Melvin Cosner  
Anna Gershon  
Max C. Glass  
Jacob Horowitz  
Dorothy Kandlis  
Jacob Klutz  
Idelle Kraus  
Marvin Krug  
Harry L. Leva

Louis Markus  
Eda Myer  
Idella Pucker  
Sylvester Lawrence  
Sher  
Nathan Temposky  
Sally Tranin  
Sophia Waldmann

### 22 Shevat - Feb. 9

Stanley Bodker  
Hyman Braver  
Oscar Brozen  
Ruth Byers  
Samuel Epstein  
Samuel Franklin  
J. Louis Glasberg  
Gabriel Hirschorn  
Brian Aaron Kraft  
Lillian Kraitichman  
Louis Pesmen  
Oscar Steinberg  
Morris Titensky  
Temma Rachel Tranin

### 23 Shevat - Feb. 10

Efraim Adamous  
Martin Bassman  
Sylvia Bratman  
Barry Eisman  
Emmanuel M. Entin  
Grace Goldberg  
Hazel Herman  
Irma Jacobson  
Marga Kretschmer  
Gloria Mallin Planzer  
Doris Spector  
Jennie Teich

## ESRIG-GOULD MEMORIAL ALCOVE TABLETS, CONT'D

### 24 Shevat - Feb. 11

Chaim Bobrowsky  
Issie Caviar  
Nadeline Eiler  
Gilbert A. Feder  
Lawrence Fats  
Goldberg  
Beverly Hoffman  
Esther M. Jaben  
Mary Levine  
Lawrence Levinson  
Ludwig Ruschin  
Harry Saltzman  
Leib Leo Zemelman  
Yehuda Zuckerman

### 25 Shevat - Feb. 12

Hersh Gorin  
Gusse Grace  
Sam Krute  
Lynn Kuluva  
Max Levin  
Ida Levitz  
Leibush Lewkowitz  
Rita Myer  
Meyer Oxman  
Jacob M. Rudnick  
Abbott Sher  
Meyer Siegel  
May Belle Simon

### 26 Shevat - Feb. 13

Stanley Altman  
Chaya Batnitzky  
Arthur Abe Blackman  
Nathan Capito  
Jacob Samuel Cone  
Malka Dworkin  
Mollie Dworkin  
Ann Federman  
Sarah Kaplan  
Margaret Krashin  
Elinore Kutler  
Eugene Levine  
Rose Mallin

Rose Silverman  
Harry Teller  
Eliezer Wang

### 27 Shevat - Feb. 14

Doris Bassin  
Sam Beiser  
Henry Dwork  
Max Gelpman  
Rose Goldstein  
David Greenstein  
Erna Huebner  
Lenora Jaben  
Esther Kahn  
David Kusnetzky

Rose F. Levine  
Milton Pollman  
Elmer Price  
Kenneth Samet  
Andre Schwartz  
Joseph Weinstock  
Marcus Weisberger

### 28 Shevat - Feb. 15

Earl L. Cone  
Ernest Horowitz  
Nadine Jacobson  
Bernard B. Levine

### 29 Shevat - Feb. 16

Lillian Bulavsky  
Israel Gendler  
Charlotte Glass  
Amalie Kornfein  
Simcha Lazerwitz  
Keramat Noorollah  
Francis Quinn  
Morris Schaffer  
Daniel Shanberg  
Morris Stern

### 30 Shevat - Feb. 17

Celia Aaron  
Michael Aaron  
William Elfanbaum  
Elizabeth Frank

Issacher Gurovitz  
Hilda Hacker  
Rose Jerwick  
Hy Kaplan  
Helen Gertrude. Katz  
Meyer Kocherov  
Abraham Levine  
Rabbi Marshall Miller  
Elena Mutchnik  
Charles Pollack  
Wayne Rothberg  
Bessie Ruben  
Abraham Spector  
Esther Zimmerman

### 1 Adar - Feb. 18

Max Fleitman  
Sarah Gordon  
Chava (Eve) Gurovitz  
Raisel Ladinsky  
Sam Mogel  
New Record  
Ida Sebert  
Manya Slotkin  
Solomon Wisman  
Harry Cone  
Jack Simons  
Sophie Mann  
Dorothy Rudnick  
Martin G. Brown  
Idell Solsky

### 2 Adar - Feb. 19

Bertha Abend  
Moses Beckenstein  
Joseph Goldman  
Harry B. Jacobson  
Abraham Manes  
Jerome Stanley  
Nerman  
Ann Weinberg  
Frances Weintraub  
Joseph Simon  
Julius Berell Simons  
Ann Singman  
Steven Kandlis

Barbara Radley  
Charles E. Wasserman  
Dr. Marvin Kahn

### 3 Adar - Feb. 20

Belle Glass  
Ester Jevinsky  
Ahron Kraitichman  
Fanny Miller  
Harry Rotkin  
Rose Ruben  
Joseph Sukiennik  
Ann Yeddis  
Sol H. Katz  
Rose Kraft Portnoff  
Frances Katz

### 4 Adar - Feb. 21

Rose Aaron  
Rose Filson  
Benjamin Harris  
Beila Dvora Jaben  
Max Molotsky  
Sophie Press  
Helen Sokol  
Martin Spitcaufsky  
John White  
Ellen Margolis  
Pauline F. Shaw  
Abraham Fishman  
Alvin Siess

### 5 Adar - Feb. 22

Linda Ilene Dorfman  
Linda Dorfman  
Abe Eissman  
Abraham Eissman  
Harry Kaplan  
Nathan Noah Maissell  
Bertha Rubin  
Esther White  
Mollie Dworetzky  
Rachelle Frohlichman  
Lawrence Jaben  
Carl Zeff  
Morris Milovitz

## ESRIG-GOULD MEMORIAL ALCOVE TABLETS, CONT'D

### 6 Adar - Feb. 23

Joseph Bernstein  
Freda Bodker  
Abe Bucksner  
Alvin Clayman  
Anna Friedman  
David Goldstein  
Julius Guckenheimer  
Philip Spector  
Jack Weinberg  
Bessie Block  
Naftalie Lefkowitz  
Alec Levitt  
Jacob Gershon  
Lilly Taylor  
Anna Rose Cohn  
Samuel Myers

### 7 Adar - Feb. 24

Gertrude Bursten  
Pesach Cohen  
Kate Dallen  
Harry Dolginoff  
Barney Friedson  
Mollie Gandal  
Charlene Gelb  
Abraham Gutovitz  
Esther Kanter  
Harvey Kantor  
Bennie Kusnetzky  
Ben Kusnetzky  
Myer Lefkowitz  
Edith Mann  
Paul Mann  
Solomon Mendelson

Sarah Bodker Milovitz  
Yehuda Mnookin  
Isador Leon Tenenbaum  
Meyer Winegar  
Kate Dallen  
Sam Tranin  
Sophie Birenboim  
Robert Hoffman  
Grace Ernstein  
Ralph Levy

### 8 Adar - Feb. 25

Bernice Daniels  
Lottie Frischer  
Hyman S. Glassman  
Louis Krasnoy  
Edna Kushner  
Gerald Mack  
Davida Markowitz  
Rose Morgan  
Harold Sher  
Philip Slobosky  
William Tigerman  
Herman Waldberg  
Israel Garfinkle  
Yehuda Schultz  
Olga Siderman  
Rose Dolgenow  
David S. Belzer  
Rose Flapan Mays

### 9 Adar - Feb. 26

Nadine Agron  
Sherman M. Bernstein  
Eugene Cohen  
Eugene Cohen

Samuel Prevan  
Zviyah Silver  
Mollie Singmon  
Phillip Solsky  
Alex D. Wacknov  
Zlata Riva Zenitsky  
Esther Littman  
Anna Kessler Raskin

### 10 Adar - Feb. 27

Sam Caplan  
Rose Chelemer  
Esther Cohen  
Benjamin Deleve  
Katie Feingold  
Henrietta Jacobson  
Jacob Lansky  
Joseph Price  
Bessie Richman  
Rose Schaffer  
Rebecca Tranin  
Yosef Yeddis  
Ida Brown  
Margaret Ann Lerner  
Rose Weiner  
Klara Maislina  
Rose Agron  
Paul Gershon

### 11 Adar - Feb. 28

Elinor Friedman  
Basia Gorin  
Izzy Hammer  
Dora Kahn  
Milton Nearenberg  
Maurice Roth

# CONTRIBUTIONS

We welcome members of our community to consider making a tribute throughout the year to honor an occasion or loved one, express gratitude, wish a speedy recovery to someone who is ill or memorialize a Yahrzeit. We gratefully acknowledge the following contributions received as of **January 10, 2026**:

## K.I. GENERAL FUND

### ANNIVERSARY

**JOYCE & STAN ZELDIN**

Edward & Phyllis Belzer

Barbie Glass

### APPRECIATION

**RABBI MOSHE**

**GRUSSGOTT**

David & Joanna Slusky

### ANNIVERSARY

**MICHAEL & KAREN**

**GORTENBURG**

### MEMORY

**ALLAN SCHIFMAN**

Harvey Schifman

Joe Schifman

Robert Schifman

**JACKYE GOLDBERG**

Barbie Glass

Dr. Donald & Natalie

Cohen

**PAUL WACKNOV**

William F. Koenigsdorf

### Yahrzeit

**ROSE BELOVE**

Marilyn Morris

**MORRIS GOLDBERG**

**RUTH GALLAS**

Alan & Donna Gallas

**JEANETTE STUDNA**

Randi & Joel Feder

**EUGENE GOLDSTEIN**

Elliott & Linda Goldstein

**SARAH LERNER**

Stephen Cline

**LAWRENCE WACKNOV**

David Wacknov

## BLUE RIDGE CEMETERY FUND

### Yahrzeit

**ISADORE GREEN**

Phillip Meltzer

**AL BEISER**

Shirley Beiser

**RACHEL MOSSERI**

**SIMCHA TARABOULOS**

Michael Taraboulos

**ROSE MASLAN**

Teri Becker

**BEN EISMAN**

**SAMUEL EISMAN**

**CONNIE KAPLAN**

Steve & Janet Eisman

**BEVERLY LEWIS SAWL**

Ellie Weinstein

**REGINA BRAUN**

Ida Kolkin

**ADELINE TREMPY**

**EDWARD TREMPY**

Janine Trempy

## KI SCHOLARSHIP FUND

### Yahrzeit

**FRANCES ROSENBERG**

### MEMORY

**JACKYE GOLDBERG**

Dr. Jay & Ellen Portnoy

## SENIOR RABBI DISCRETIONARY FUND

### Yahrzeit

**MIRIAM WAJCMAN**

Mindy & David Wajcman

**MERRILY SHNEIDER**

**BEN SMUCKLER**

**JESSICA SHAPIRO**

Joe Smuckler

**MAURICE JERWICK**

Sharon Jerwick

**ROBERT SHAW**

Steve Shaw

Edith Shaw

## RABBI MANDL DISCRETIONARY FUND

### Yahrzeit

**EVELYN SOLSKY**

Dr. Marilyn Solsky

## ALLAN GREENBERG YOUTH LOUNGE

### MEMORY

**JACKYE GOLDBERG**

Eunice Snitz

Dr. & Mrs. Norman Burk

Solomon Taraboulos

Jack Foster

Simcha & Terry Krause

### Yahrzeit

**LILLIAN GREENBERG**

Simcha & Terry Krause

## SHER KIDDUSH FUND

### MEMORY

**JACKYE GOLDBERG**

Judith Lanes

### Yahrzeit

**RICHARD SHER**

Carole Sher

## BENEVOLENT FUND

### Yahrzeit

**ADELINE TREMPY**

**EDWARD TREMPY**

Janine Trempy

## CHAI ANNIVERSARY KIDDUSH FUND

**IDA & CRAIG KOLKIN**

**PHYLLIS & MAURY KOHN**

**MARLENE & ARI**

**LUBOWICZ**

## BUILDING FUND

### HONOR

**RABBI MOSHE**

**GRUSSGOTT**

**CANTOR ARON HAYOUN**

Richard Wasserstrom

## FRED DEVINKI RELIGIOUS SCHOOL

### Yahrzeit

**SHERRY WALDMANN**

Norm & Heidy Farber

## SCHIFMAN HUNGER FUND

### MEMORY

**JACKYE GOLDBERG**

Phylis Schachter

## SHIVA/CHESED FUND

### MEMORY

**JACKYE GOLDBERG**

Joe Adamous

**MINYANAIRE OF THE  
YEAR**

**DAVID KERSHNER**

Sonny & Max Singer

### Yahrzeit

**AARON PFEFER**

Debbie Cohen Entine

Sunday	Monday	Tuesday	Wednesday	Thursday	Friday	Saturday
<b>1 14 Shevat</b> 9:00am Shacharit 9:15am Religious School 9:45am Book Of Joshua Class 11:30am Tu B'Shvat Women's Brunch (Ages 7+) 5:30pm Mincha/Maariv Sunrise: 7:25am Sunset: 5:40pm	<b>2 15 Shevat</b> <b>Tu B'Shvat</b> 7:00am Shacharit 5:30pm Mincha/Maariv Sunrise: 7:24am Sunset: 5:41pm	<b>3 16 Shevat</b> 7:00am Shacharit 5:30pm Mincha/Maariv Sunrise: 7:23am Sunset: 5:42pm	<b>4 17 Shevat</b> 7:00am Shacharit 5:00pm Hebrew School 5:30pm Mincha/Maariv Sunrise: 7:23am Sunset: 5:43pm	<b>5 18 Shevat</b> 7:00am Shacharit 5:30pm Mincha/Maariv 7:00pm Women's Tefillah Class (Online) Sunrise: 7:22am Sunset: 5:45pm	<b>6 19 Shevat</b> 7:00am Shacharit 5:28pm Candle Lighting 5:35pm Kabbalat Shabbat Sunrise: 7:21am Sunset: 5:46pm	<b>7 20 Shevat Yitro</b> 9:00am Shabbat Services 4:20pm Rabbi's Parsha Class 5:05pm Mincha/Seudah Shellsnit 6:22pm Havdalah Sunrise: 7:19am Sunset: 5:47pm
<b>8 21 Shevat</b> 9:00am Shacharit 9:15am Religious School 9:45am Book Of Joshua Class 10:00am Parent Meeting 5:35pm Mincha/Maariv Sunrise: 7:18am Sunset: 5:48pm	<b>9 22 Shevat</b> 7:00am Shacharit 5:35pm Mincha/Maariv Sunrise: 7:17am Sunset: 5:49pm	<b>10 23 Shevat</b> 7:00am Shacharit 5:35pm Mincha/Maariv Sunrise: 7:16am Sunset: 5:50pm	<b>11 24 Shevat</b> 7:00am Shacharit 5:00pm Hebrew School 5:35pm Mincha/Maariv Sunrise: 7:15am Sunset: 5:51pm	<b>12 25 Shevat</b> 7:00am Shacharit 5:35pm Mincha/Maariv 7:00pm Women's Tefillah Class (Online) Sunrise: 7:14am Sunset: 5:53pm	<b>13 26 Shevat</b> 7:00am Shacharit 5:36pm Candle Lighting 5:45pm Kabbalat Shabbat Sunrise: 7:13am Sunset: 5:54pm	<b>14 27 Shevat Mishpatim Shabbat Mevarchim Parshat Shekalim</b> 9:00am Shabbat Services 9:45am Women's Circle 10:00am Shul Jr. 4:30pm Rabbi's Parsha Class 5:15pm Mincha/Seudah Shellsnit 6:30pm Havdalah Sunrise: 7:12am Sunset: 5:55pm
<b>15 28 Shevat</b> 9:00am Shacharit 9:15am Religious School 9:45am Book Of Joshua Class 12:30pm KI Kids Olympics: On Ice @ KCIC 5:45pm Mincha/Maariv Sunrise: 7:10am Sunset: 5:56pm	<b>16 29 Shevat</b> 7:00am Shacharit 5:45pm Mincha/Maariv Sunrise: 7:09am Sunset: 5:57pm	<b>17 30 Shevat</b> <b>Rosh Chodesh Adar</b> 7:00am Shacharit 5:45pm Mincha/Maariv Sunrise: 7:08am Sunset: 5:58pm	<b>18 1 Adar</b> <b>Rosh Chodesh Adar</b> 7:00am Shacharit 5:00pm Hebrew School 5:45pm Mincha/Maariv Sunrise: 7:07am Sunset: 5:59pm	<b>19 2 Adar</b> 7:00am Shacharit 5:45pm Mincha/Maariv 7:00pm Women's Tefillah Class (Online) Sunrise: 7:05am Sunset: 6:00pm	<b>20 3 Adar</b> 7:00am Shacharit 5:44pm Candle Lighting 5:50pm Kabbalat Shabbat Sunrise: 7:04am Sunset: 6:02pm	<b>21 4 Adar Terumah</b> 9:00am Shabbat Services 10:00am Shul Jr. 4:35pm Rabbi's Parsha Class 5:20pm Mincha/Seudah Shellsnit 6:38pm Havdalah 6:45pm Chili Night & Melava Malkah (Adults Only) Sunrise: 7:03am Sunset: 6:03pm
<b>22 5 Adar</b> 9:00am Shacharit 9:15am Religious School 9:45am Book Of Joshua Class 3:00pm Comfort in Community: Living with Pregnancy Loss @ Beth Shalom 5:50pm Mincha/Maariv Sunrise: 7:01am Sunset: 6:04pm	<b>23 6 Adar</b> 7:00am Shacharit 5:50pm Mincha/Maariv Sunrise: 7:00am Sunset: 6:05pm	<b>24 7 Adar</b> 7:00am Shacharit 5:50pm Mincha/Maariv Sunrise: 6:59am Sunset: 6:06pm	<b>25 8 Adar</b> 7:00am Shacharit 5:00pm Hebrew School 5:50pm Mincha/Maariv Sunrise: 6:57am Sunset: 6:07pm	<b>26 9 Adar</b> 7:00am Shacharit 5:50pm Mincha/Maariv 7:00pm Women's Tefillah Class (Online) Sunrise: 6:56am Sunset: 6:08pm	<b>27 10 Adar</b> 7:00am Shacharit 5:51pm Candle Lighting 6:00pm Kabbalat Shabbat Sunrise: 6:54am Sunset: 6:09pm	<b>28 11 Adar Tetzaveh Parshat Zachor</b> 9:00am Shabbat Services 10:00am Shul Jr. 4:45pm Rabbi's Parsha Class 5:30pm Mincha/Seudah Shellsnit 6:46pm Havdalah Sunrise: 6:53am Sunset: 6:10pm

# THE FOCAL POINT



10501 Conser St.  
Overland Park, KS 66212  
(913) 642-1880  
kisyn.org

Periodical  
Postage  
Paid at  
Kansas City, MO

## THE FOCAL POINT OF KEHILATH ISRAEL SYNAGOGUE



RABBI MOSHE GRUSSGOTT  
**Senior Rabbi**

CANTOR ARON HAYOUN  
**Hazzan**

RABBI HERBERT J. MANDL, Ph.D.  
**Rabbi Emeritus**

ROBIN ABRAMOWITZ  
**Executive Director**

SHELLEY RISSIEN  
**Director, K.I. Fred Devinki Religious School**

JOE ADAMOUS  
**President**

SAM DEVINKI  
**Honorary President for Life**

The Focal Point (USPS 292-040) is published monthly except for the June/July issue by the Kehilath Israel Synagogue, 10501 Conser Street, Shawnee Mission, KS 66212-2643. Periodical Postage Paid at Kansas City, MO.

**POSTMASTER:** Send address changes to The Focal Point c/o Kehilath Israel Synagogue, 10501 Conser Street, Shawnee Mission, KS 66212-2643.

913.642.1880 fax 913.642.7332